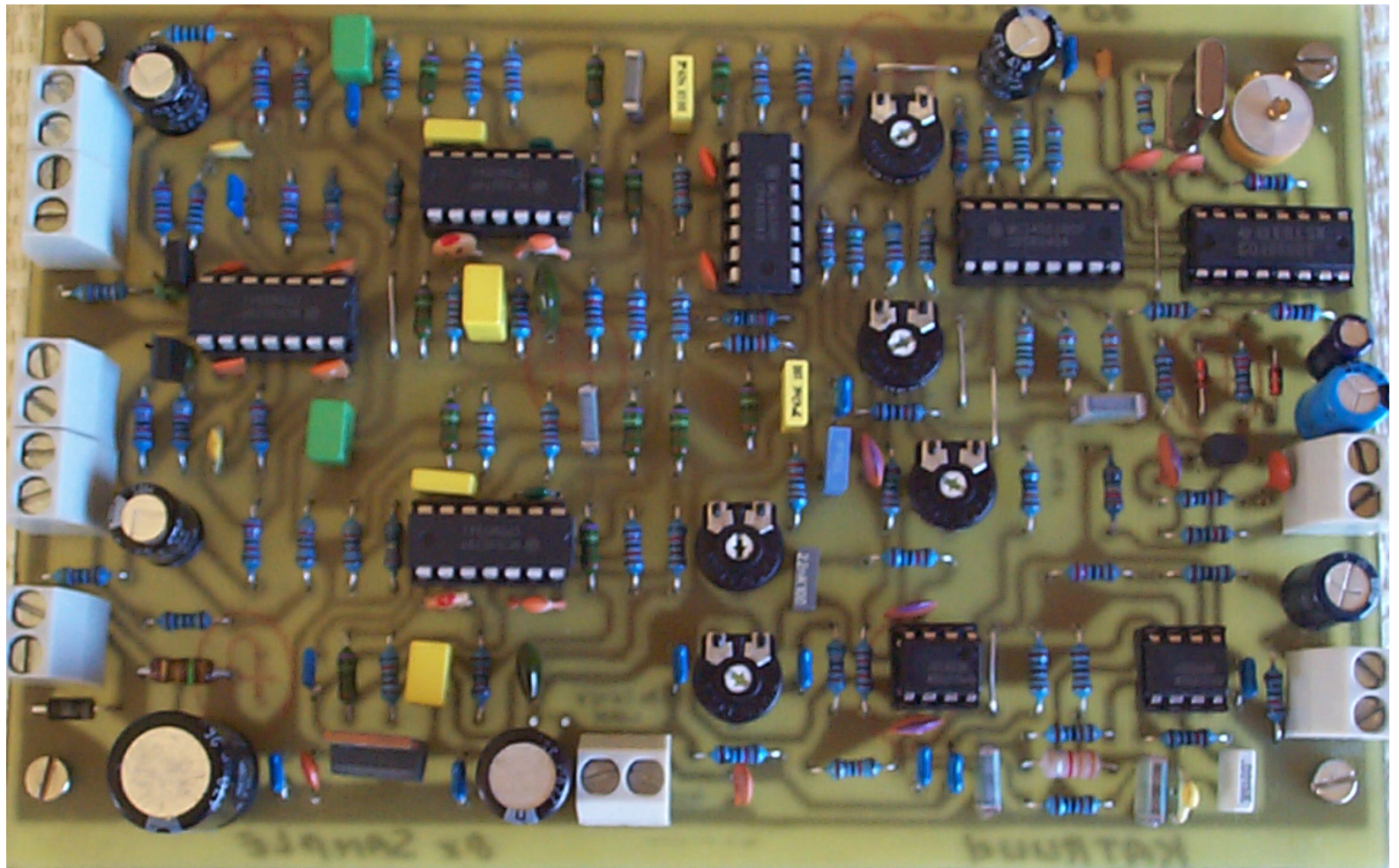


*Ka + Ruud  
Lronics*

*KatRuud 8x Sample Coder  
(IMPROVED 8x Sample)*

*Foto Prototype*



*Hierbij het schema en de layout van de*

*"IMPROVED 8x Sample Coder"*

*Veel bouwplezier*

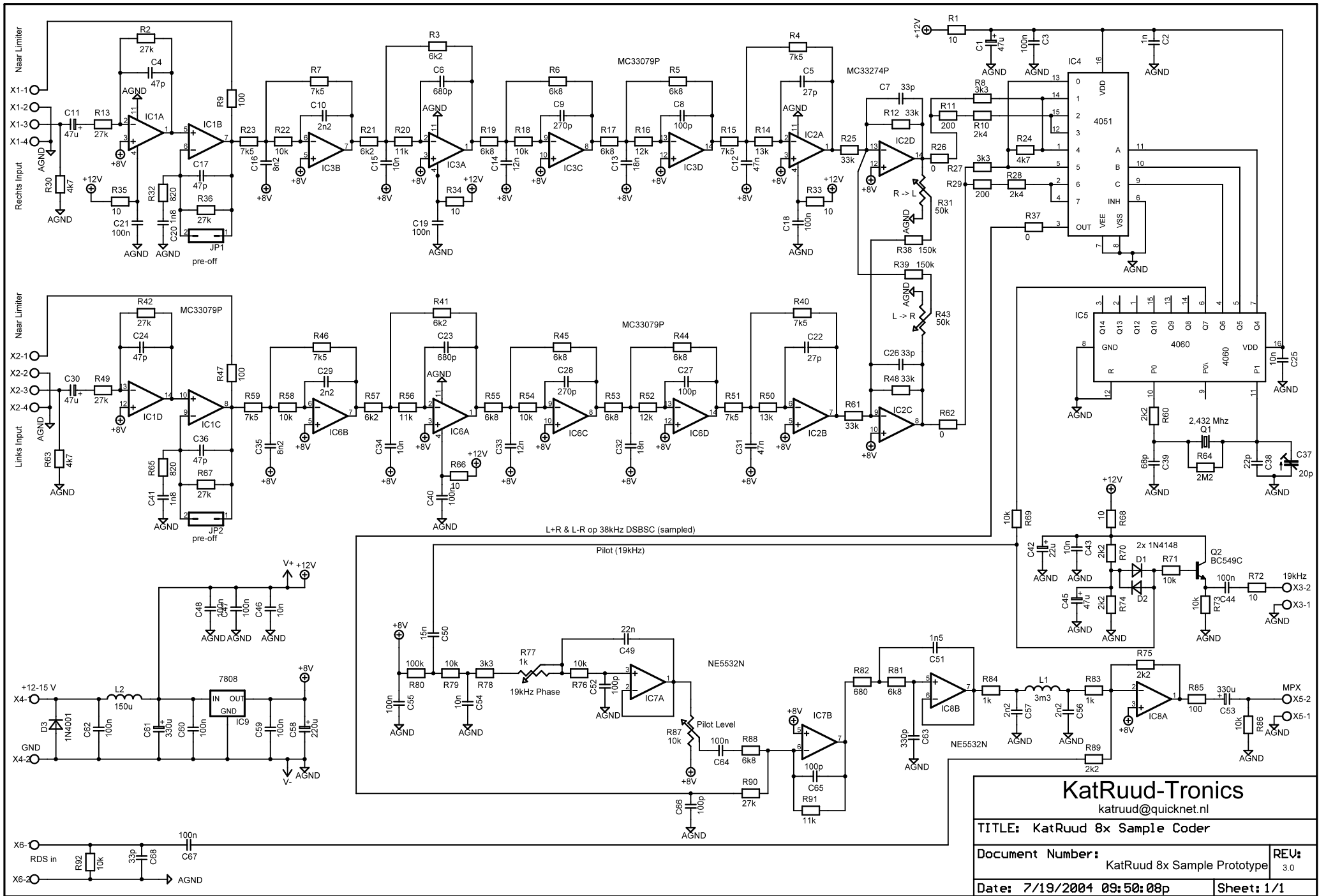
*bij eventuele vragen kunt U altijd een*

*mailtje sturen naar:*

`katruud@quicknet.nl / ruud@phantomfm.nl`

of naar

`jeroen@phantomfm.org`



**KatRuud-Tronics**

katruud@quicknet.nl

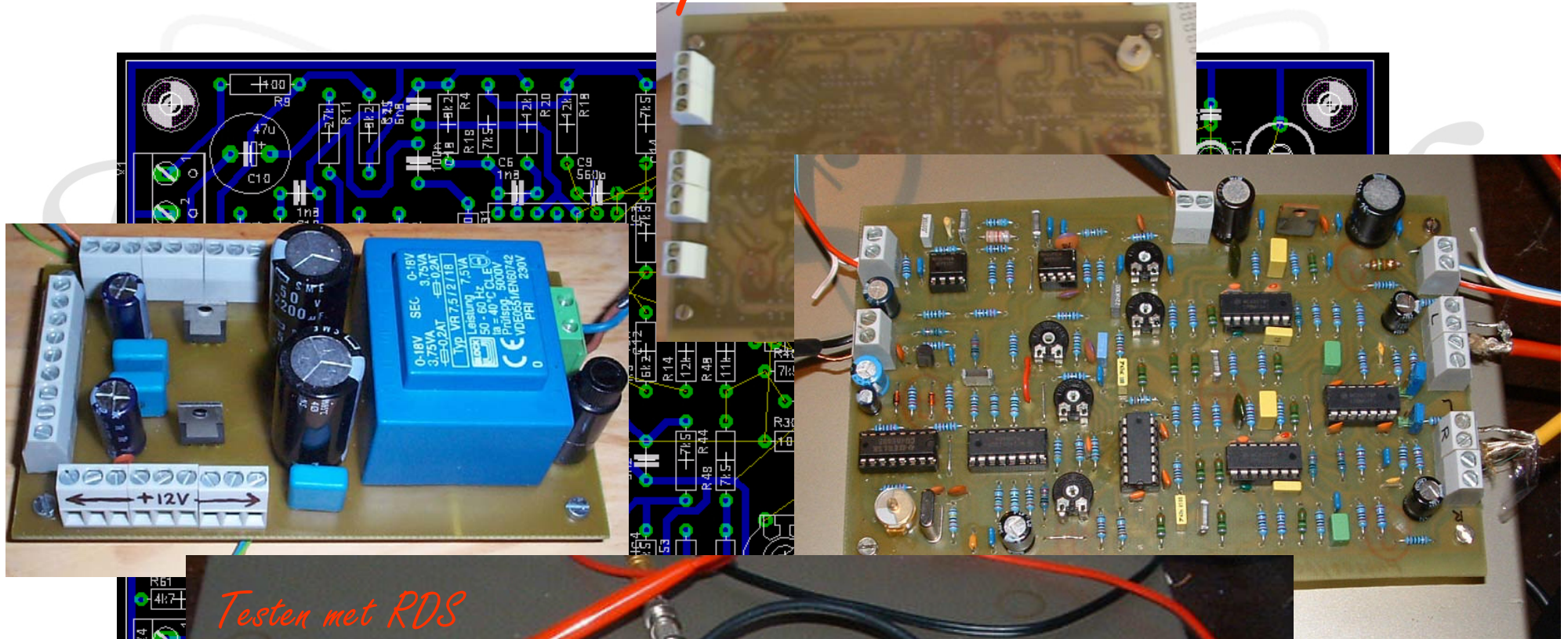
TITLE: KatRuud 8x Sample Coder

Document Number: KatRuud 8x Sample Prototype REV: 3.0

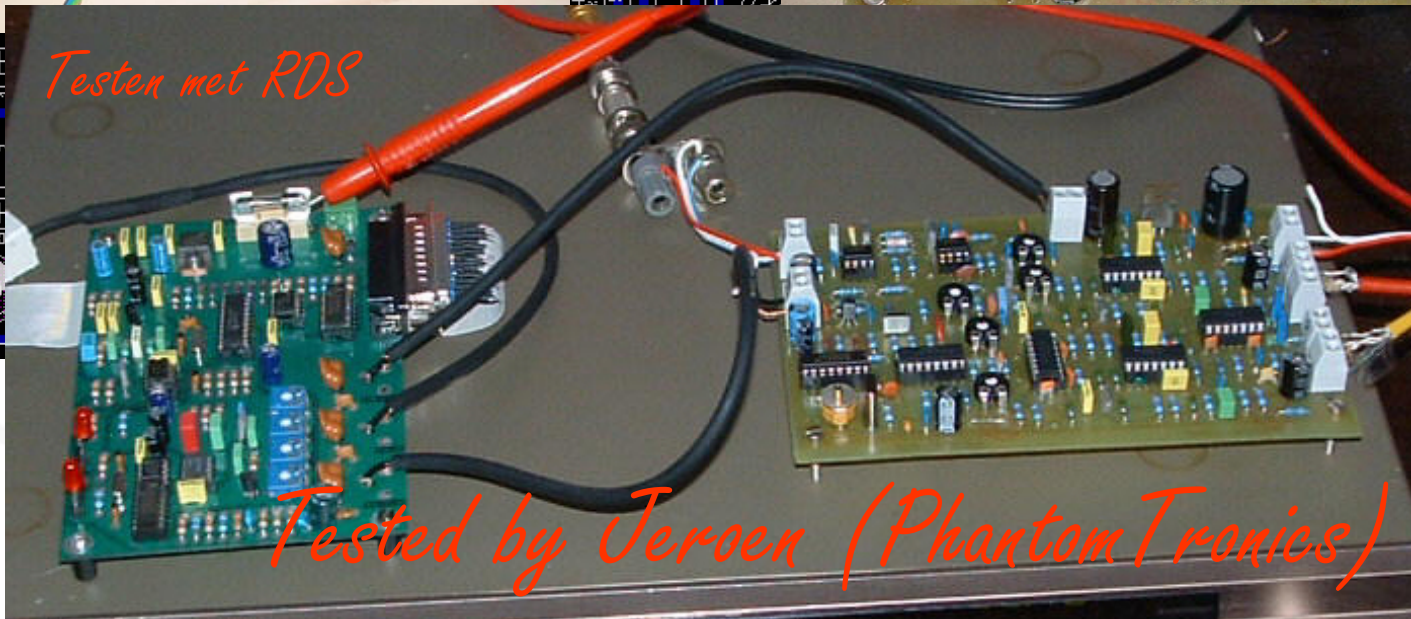
Date: 7/19/2004 09:50:08p

Sheet: 1/1

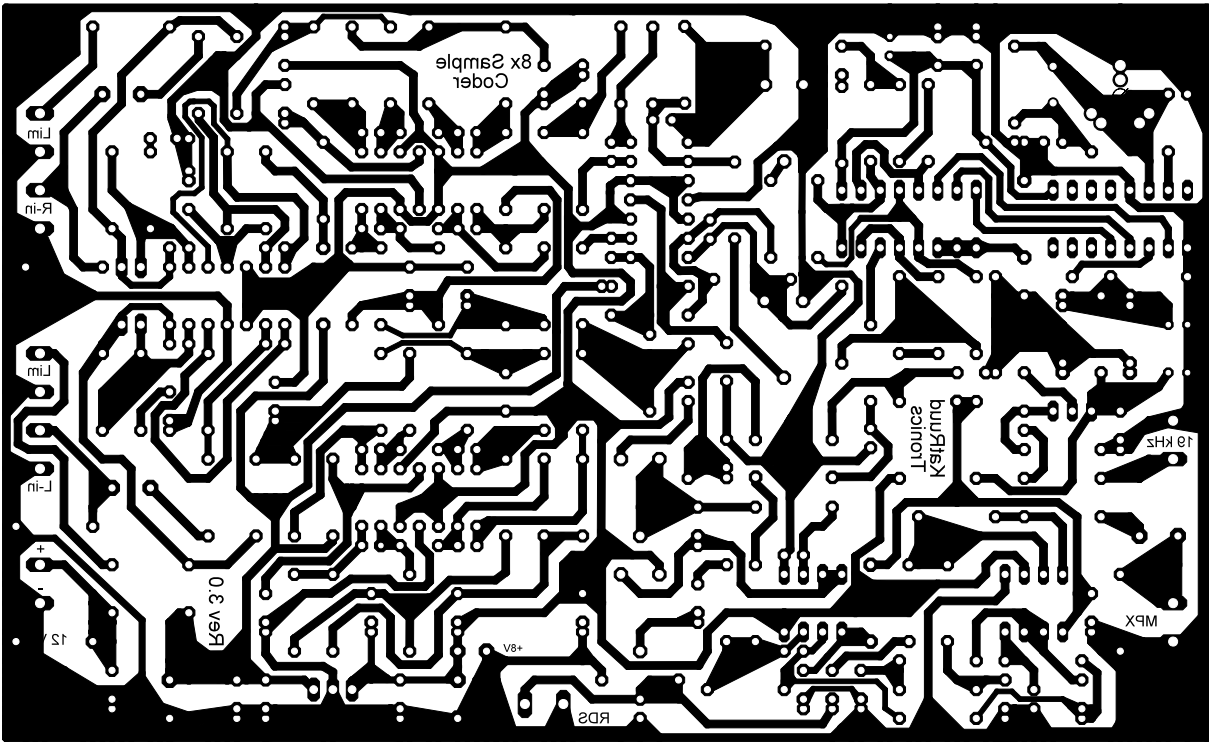
# Ontwerp en testen

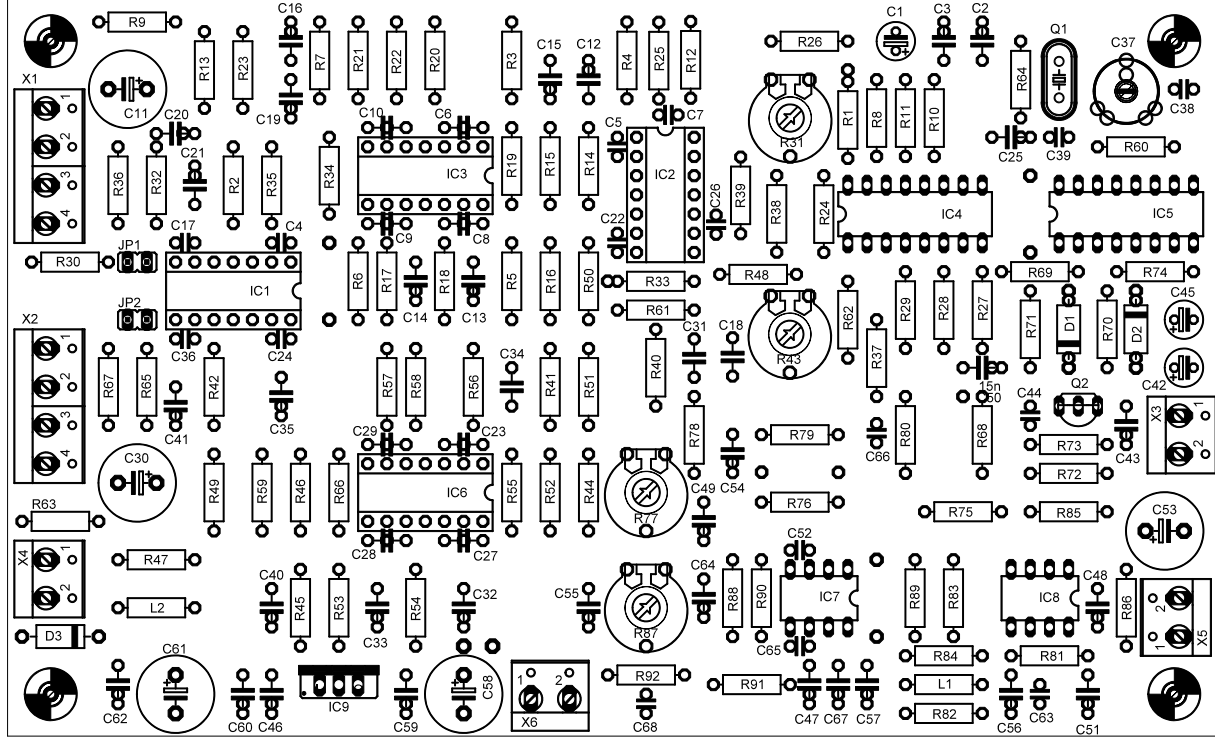


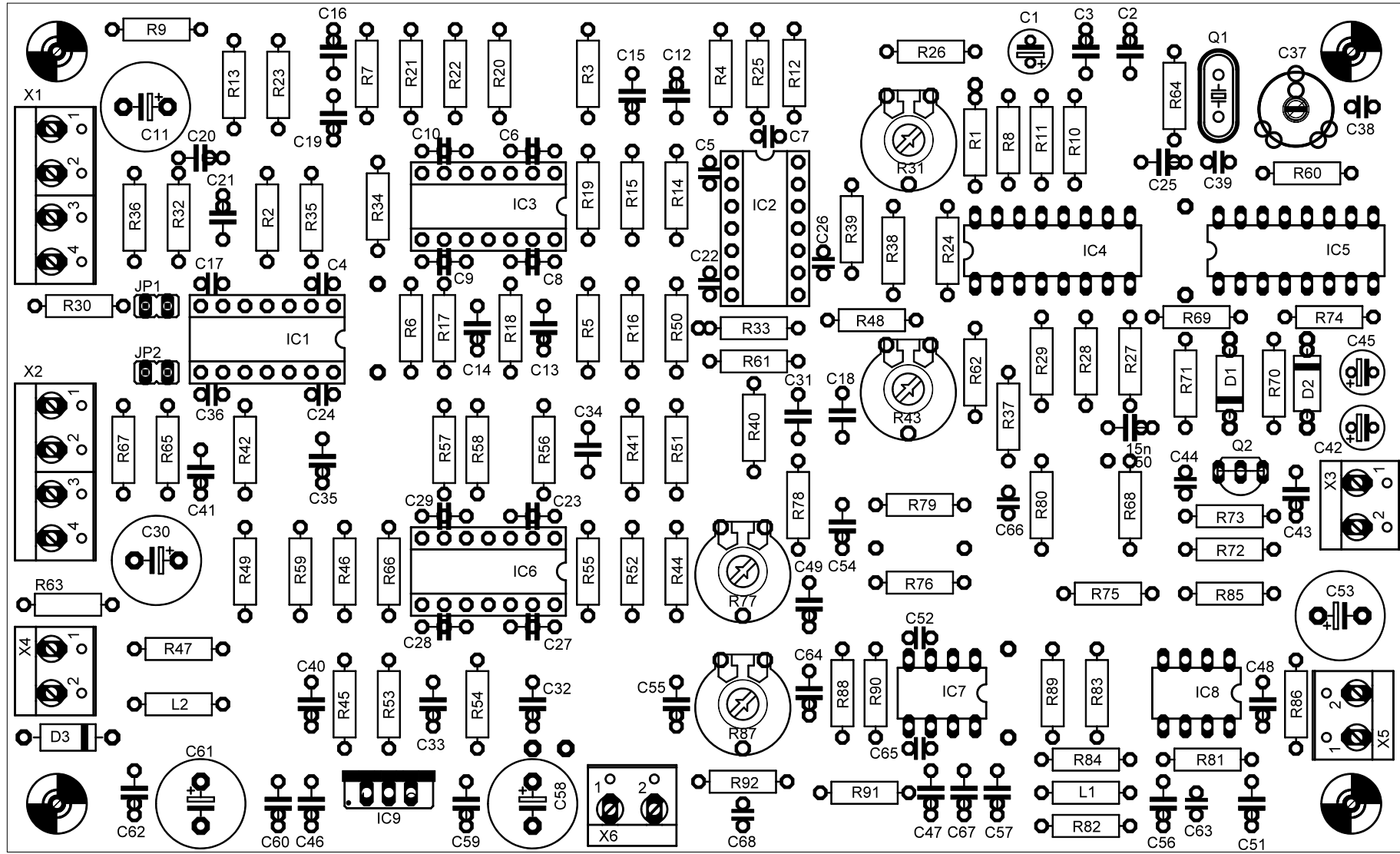
Testen met RDS



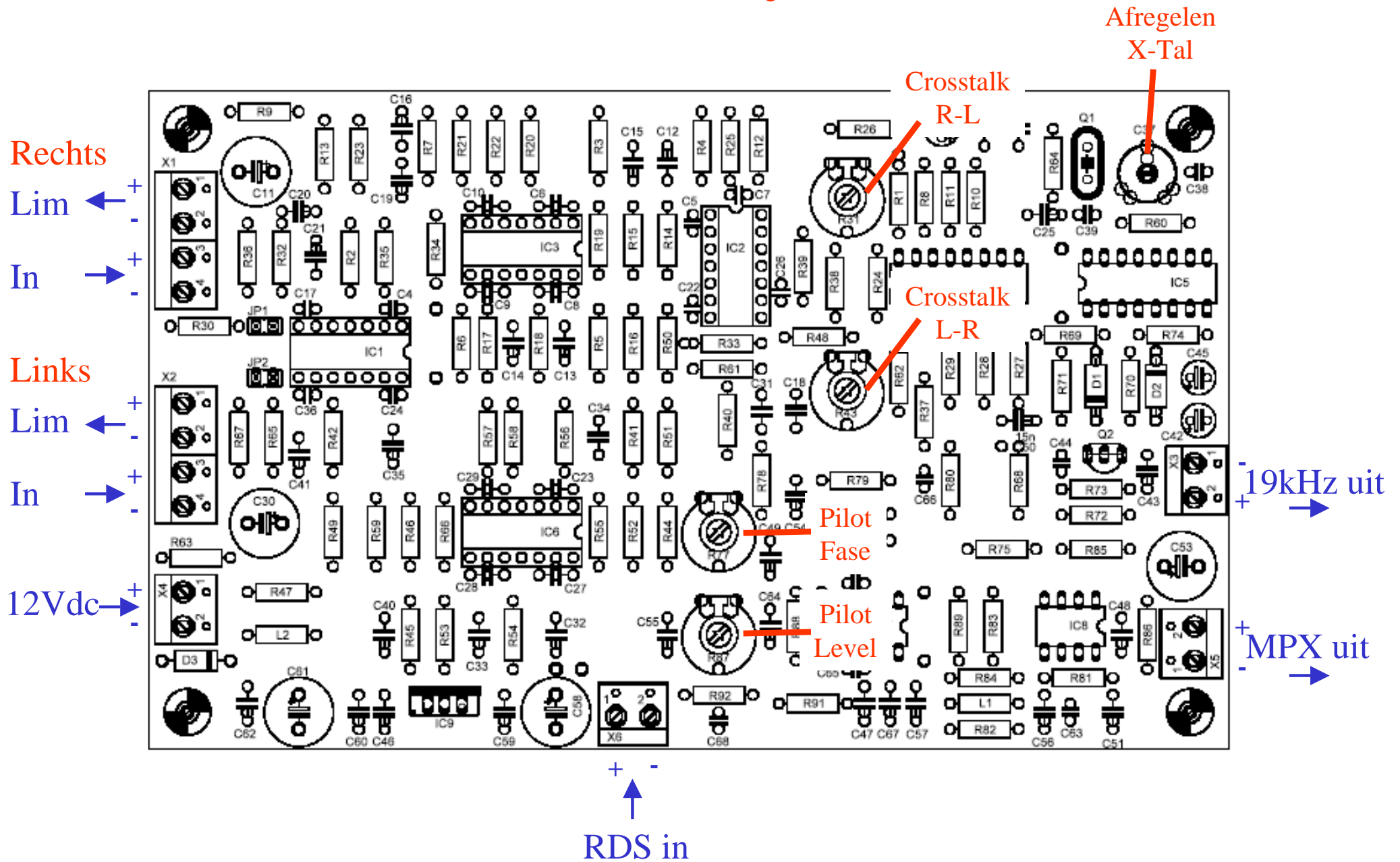
Tested by Jeroen (PhantomTronics)





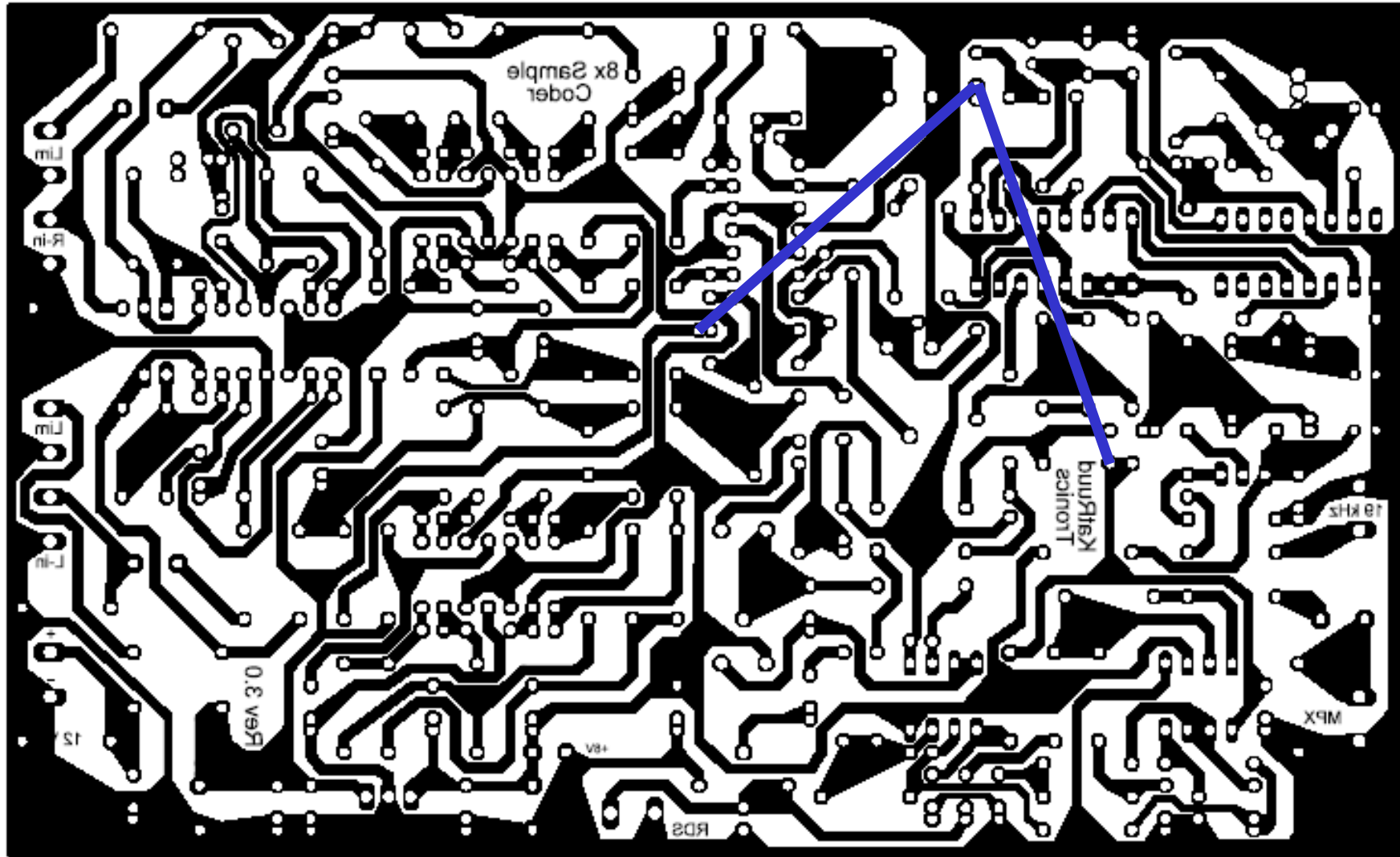


# Aansluitingen





*Vergeet niet de twee draadbruggen aan de onderkant van de print te leggen*



*Anders doet hij het echt niet*

Partlist (pagina 1)

KatRuud 8x Sample Coder (Rev 3.0)

Part	Value	
C1	47u/25V	(16V)
C2	1n	
C3	100n	
C4	47p	
C5	27p	
C6	680p	
C7	33p	
C8	100p	
C9	270p	
C10	2n2	
C11	47u/25V	(16V)
C12	47n	
C13	18n	
C14	12n	
C15	10n	
C16	8n2	
C17	47p	
C18	100n	
C19	100n	
C20	1n8	
C21	100n	
C22	27p	
C23	680p	
C24	47p	
C25	10n	
C26	33p	
C27	100p	
C28	270p	
C29	2n2	
C30	47u/25V	(16V)
C31	47n	
C32	18n	
C33	12n	
C34	10n	
C35	8n2	
C36	47p	
C37	0-20p 0-65p	Trimmer (groen) Trimmer (geel) C38 vervalt dan
C38	22p	
C39	68p	
C40	100n	
C41	1n8	
C42	22u/25V	(16V)
C43	10n	
C44	100n	
C45	47u/25V	(16V)
C46	10n	

Partlist (pagina 2)

KatRuud 8x Sample Coder (Rev 3.0)

C47	100n	
C48	100n	
C49	22n	
C50	15n	
C51	1n5	
C52	100p	
C53	330u/25V	(16V)
C54	10n	
C55	100n	
C56	2n2	
C57	2n2	
C58	220u/25V	(16V)
C59	100n	
C60	100n	
C61	330u/25V	
C62	100n	
C63	330p	
C64	100n	
C65	100p	
C66	100p	
C67	100n	
C68	33p	
D1	1N4148	
D2	1N4148	
D3	1N4001	
IC1	MC33079P	
IC2	MC33274P	eventueel MC33079
IC3	MC33079P	
IC4	4051	
IC5	4060	
IC6	MC33079P	
IC7	NE5532N	
IC8	NE5532N	
IC9	7808	
JP1	jumper	
JP2	jumper	
L1	3m3	
L2	150u	(100u of 220u mag ook)
Q1	2,432 Mhz	HC49
Q2	BC549C	
R1	10	
R2	27k	
R3	6k2	

Partlist (pagina 3)

KatRuud 8x Sample Coder (Rev 3.0)

R4	7k5	
R5	6k8	
R6	6k8	
R7	7k5	
R8	3k3	
R9	100	
R10	2k4	
R11	200	
R12	33k	
R13	27k	
R14	13k	
R15	7k5	
R16	12k	
R17	6k8	
R18	10k	
R19	6k8	
R20	11k	
R21	6k2	
R22	10k	
R23	7k5	
R24	4k7	
R25	33k	
R26	0	
R27	3k3	
R28	2k4	
R29	200	
R30	4k7	
R31	50k	Potmeter 10mm
R32	820	
R33	10	
R34	10	
R35	10	
R36	27k	
R37	0	
R38	150k	
R39	150k	
R40	7k5	
R41	6k2	
R42	27k	
R43	50k	Potmeter 10mm
R44	6k8	
R45	6k8	
R46	7k5	
R47	100	
R48	33k	
R49	27k	
R50	13k	
R51	7k5	
R52	12k	

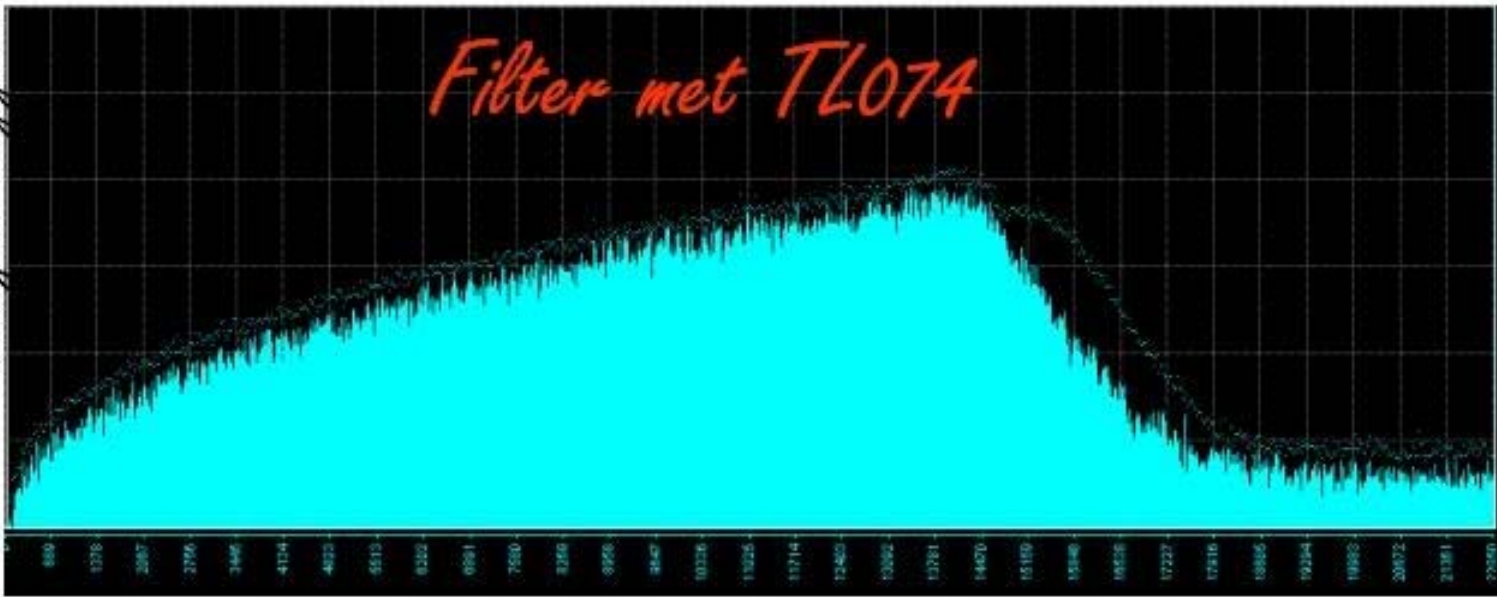
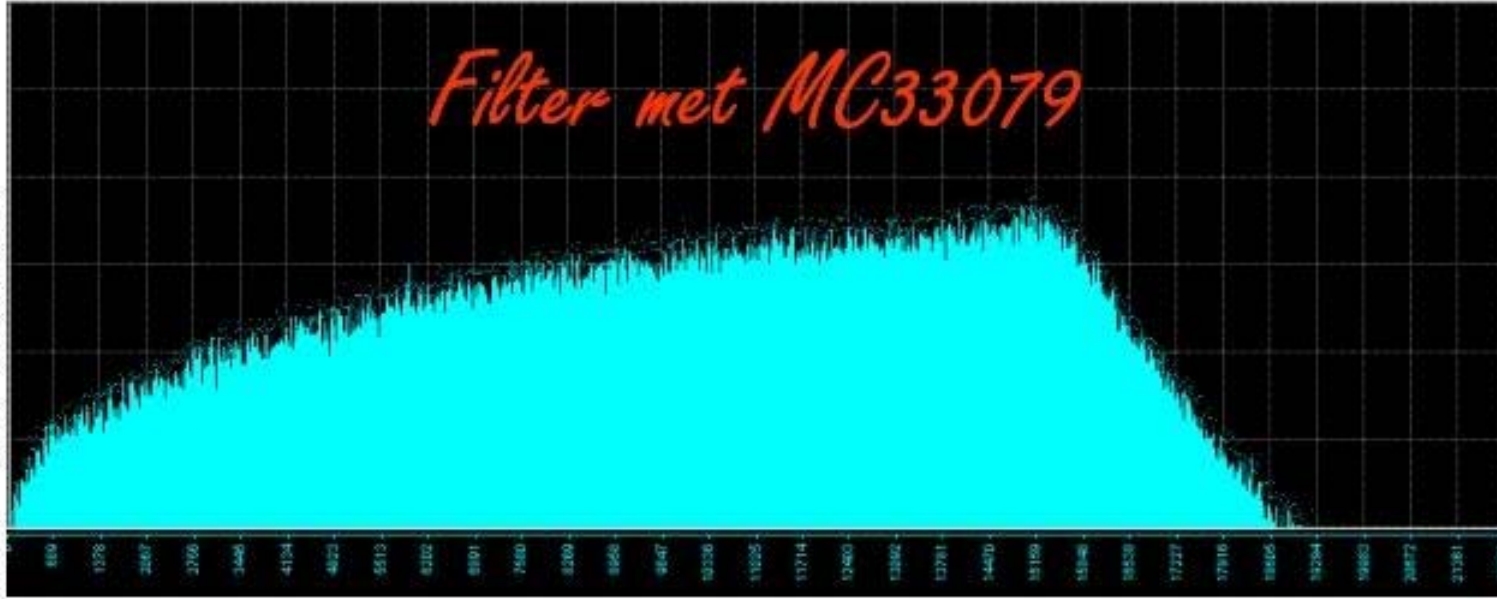
Partlist (pagina 4)

KatRuud 8x Sample Coder (Rev 3.0)

R53	6k8	
R54	10k	
R55	6k8	
R56	11k	
R57	6k2	
R58	10k	
R59	7k5	
R60	2k2	
R61	33k	
R62	0	
R63	4k7	
R64	2M2	(1M of 1M5 mag ook)
R65	820	
R66	10	
R67	27k	
R68	10	
R69	10k	
R70	2k2	
R71	10k	
R72	10	
R73	10k	
R74	2k2	
R75	2k2	
R76	10k	
R77	1k	Potmeter 10mm
R78	3k3	
R79	10k	
R80	100k	
R81	6k8	
R82	680	
R83	1k	
R84	1k	
R85	100	
R86	10k	
R87	10k	Potmeter 10mm
R88	6k8	
R89	2k2	
R90	27k	
R91	11k	
R92	10k	
X1	W237-04P	Connector
X2	W237-04P	Connector
X3	W237-02P	Connector
X4	W237-02P	Connector
X5	W237-02P	Connector
X6	W237-02P	Connector

Probeer niet de MC33079 te vervangen door b.v. de TL074

Plaatjes zeggen meer dan woorden



KatRaud-Tronics